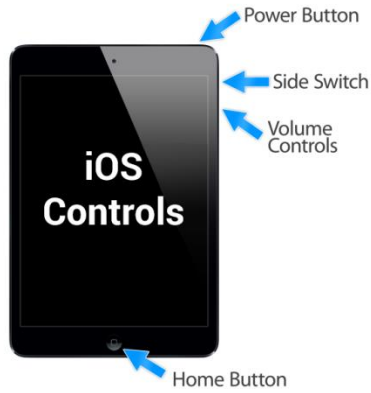
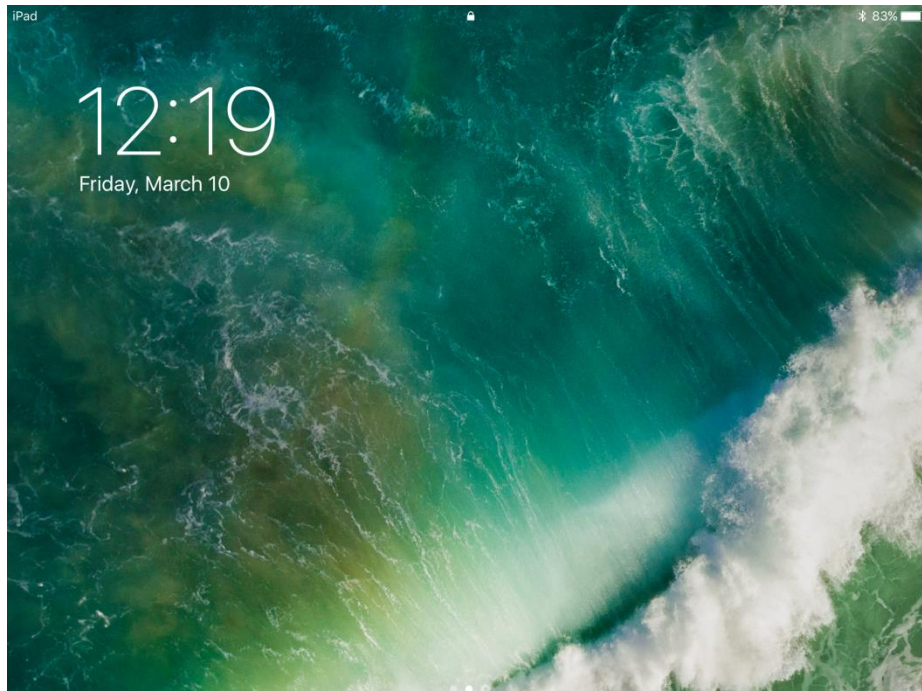


# Enroll your new iPad/iPhone.

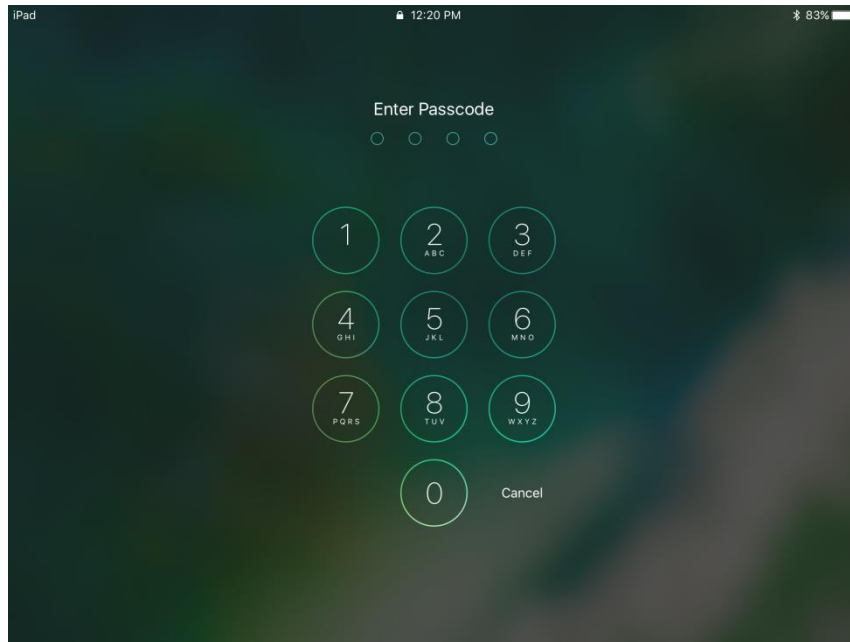
Your email, calendar and assigned apps can all automatically be assigned to your new device. You will just need to enroll your device into Airwatch with your account credentials to make this all happen automatically the following guide will take you through the process step by step.



1. You will start at the lock screen, press the Home button to continue

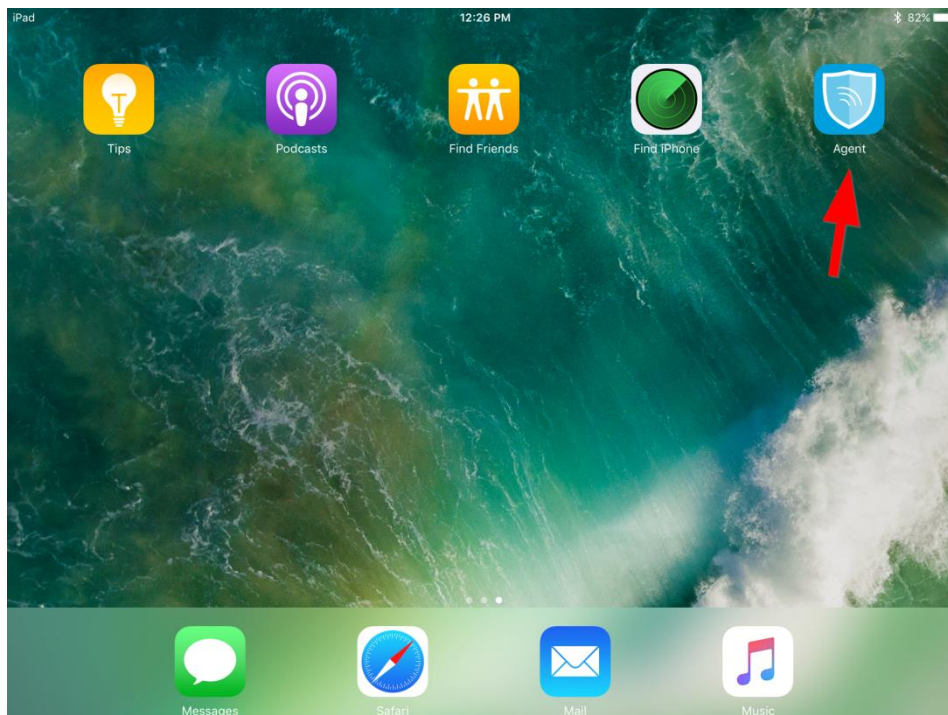


2. Unlock the device with the PIN code.  
(For Shared MSLCC Devices the code is **2425**)



3. You will need to locate the app called "Agent". The Agent app could be located on one of the pages of apps. Swipe left or right to switch pages. Once found tap it to open it.

(\*\*BYOD Users will need to download "**Airwatch Agent**" from the App Store\*\*)

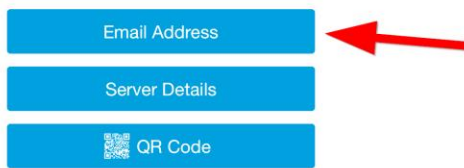


4. You will be asked how you want to identify yourself. Select "Email Address".

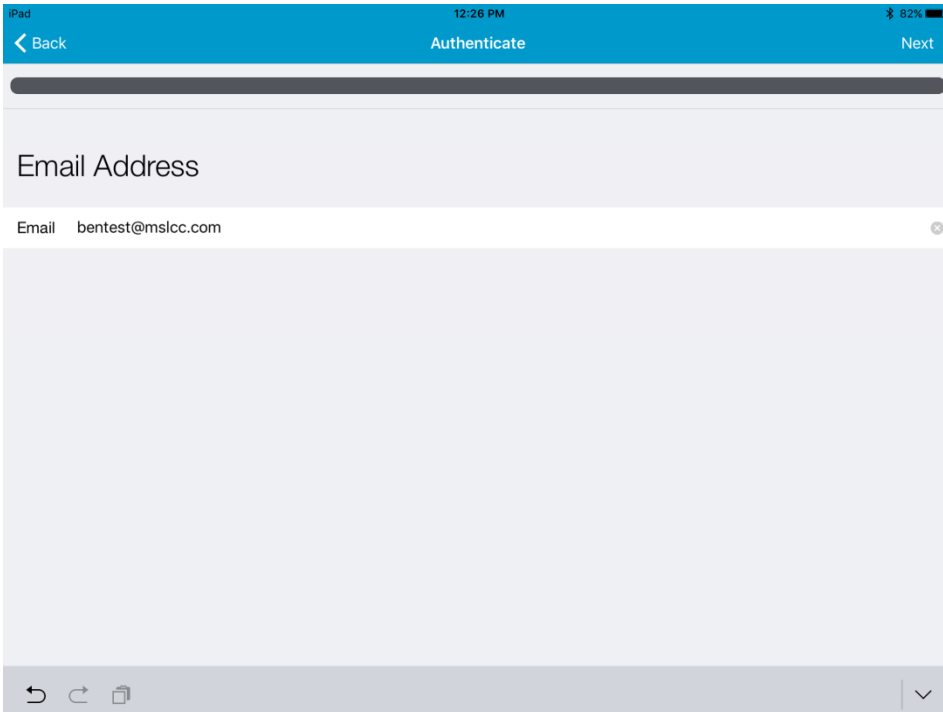


The multi-step enrollment process begins with authentication.

Choose authentication method:



5. Enter your MSLCC email address and click Next.



6. The next fields will need to be filled with your existing Windows username and password. Click Next when you are done.

Authenticate

Back Next

User Credentials

Username m9999

Password ●●●●●●●●●●●●

Next

7. If your credentials are accepted you will be sent to Enable Device Management screen. You will then need to select "Redirect & Enable" at the bottom of the screen to continue

Secure

Back

Enable Device Management

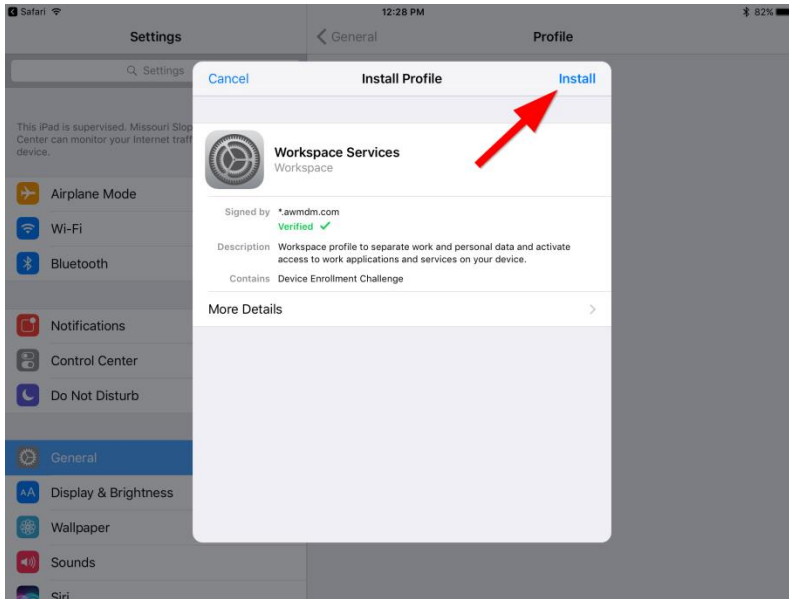
To enable your device, you will be redirected to Safari and Settings

Why?

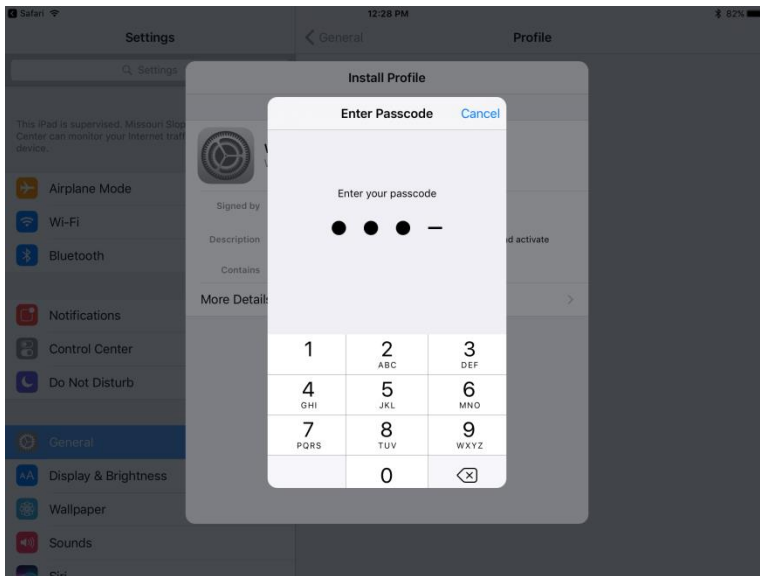
- Access your company resource
- Remove company data in the event of loss or theft

Redirect & Enable

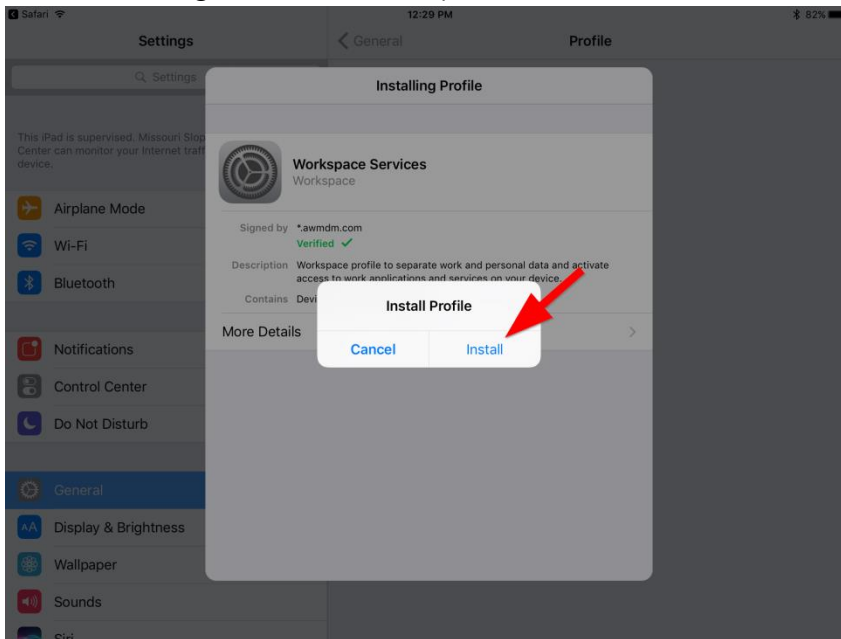
8. Next you will need to install the profile for the management system. Click "Install" in the Install Profile window.



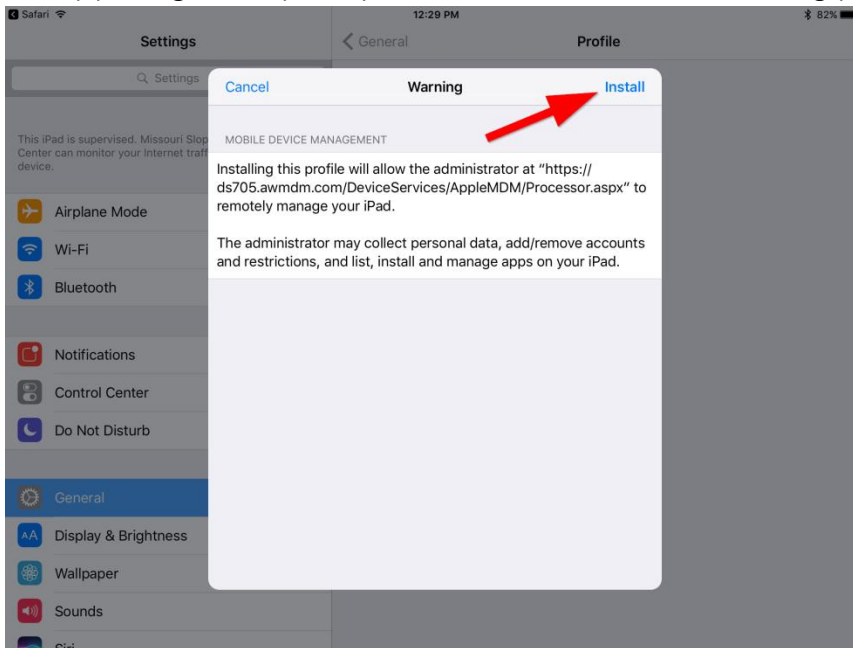
9. You will need to confirm the passcode again to complete this action. (For Shared MSLCC Devices the code is **2425**)



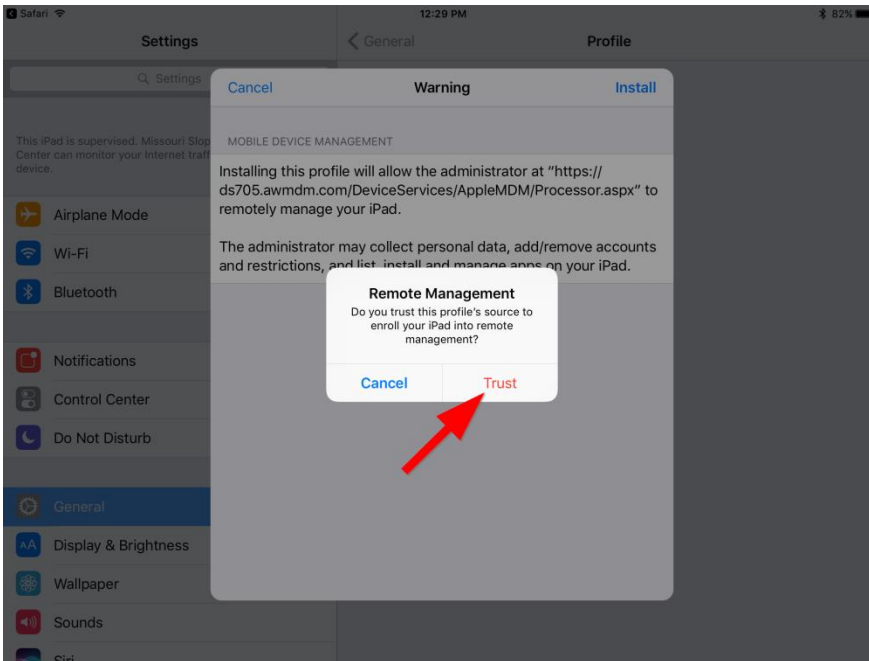
10. If asked again to install the profile. Click install.



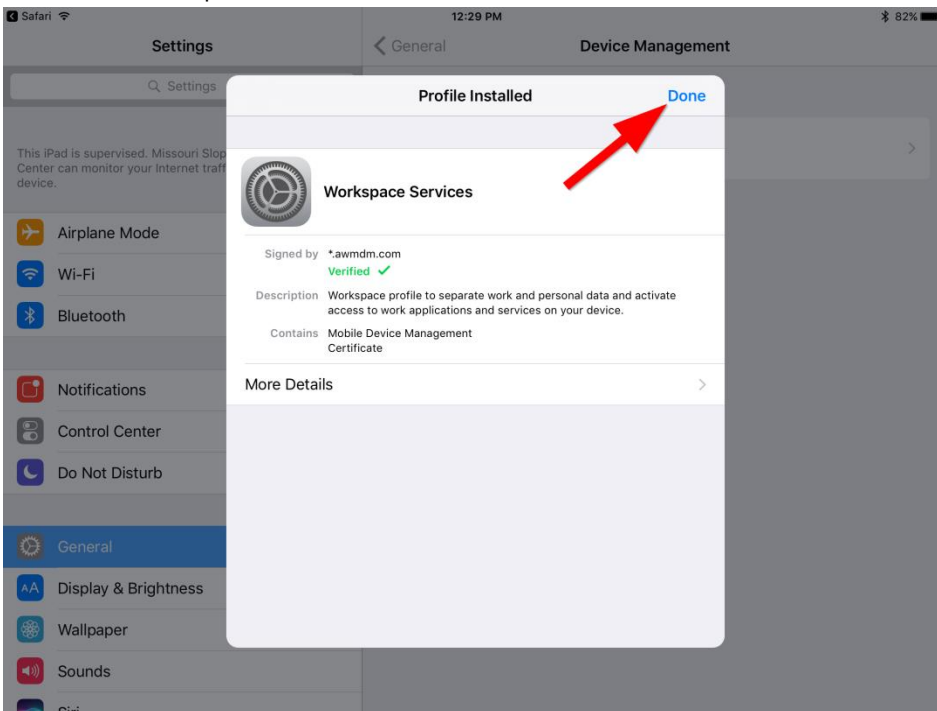
11. Apple again requires you to click install on the warning page.



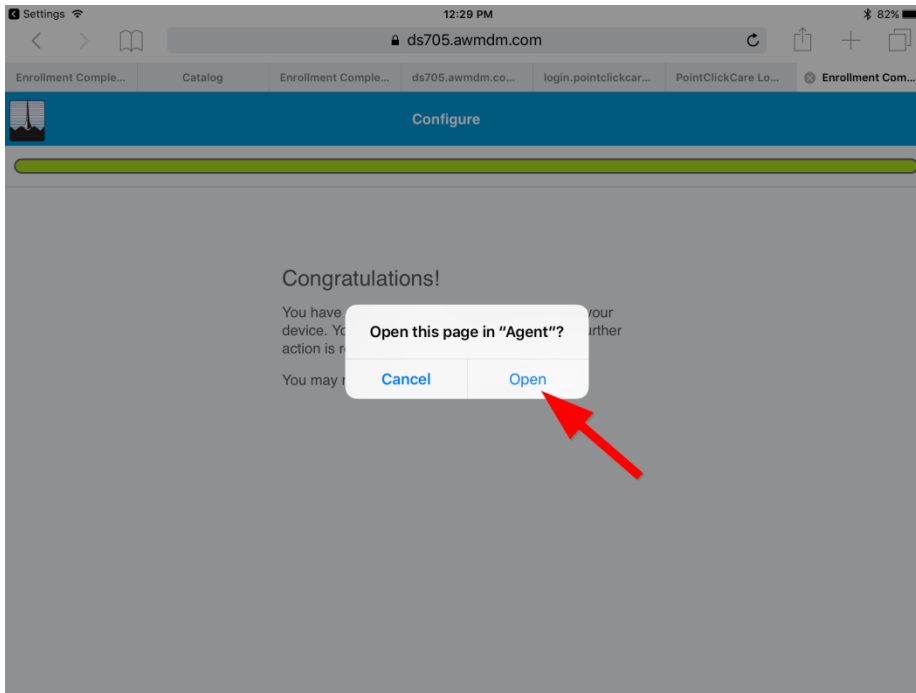
12. Apple again needs to confirm you trust this management. You must click Trust to continue



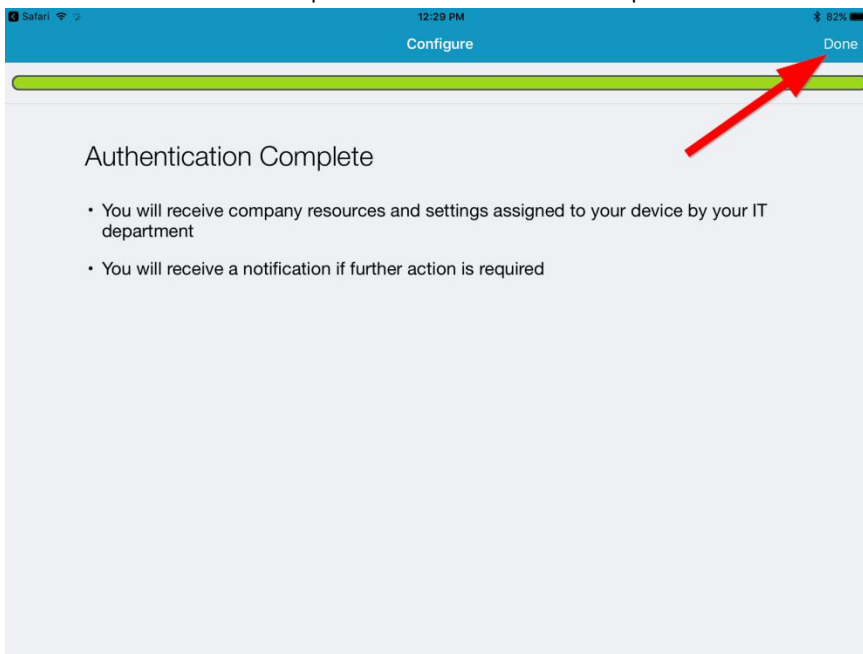
13. The profile should be installed and confirmed on the Profile Installed window. Click Done to proceed.



14. You will be taken to a browser window with "Congratulations!" displayed. This means the process was successful. A window with "Open this page in "Agent"?" will appear. Click open to proceed.

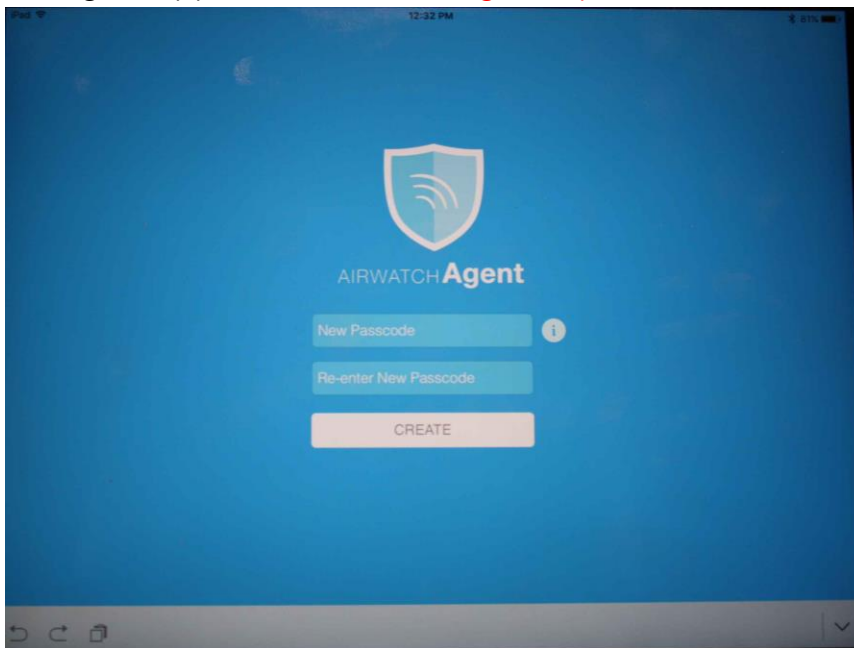


15. The device will take you back to the Airwatch Agent which will display "Authentication Complete", select Done to proceed.

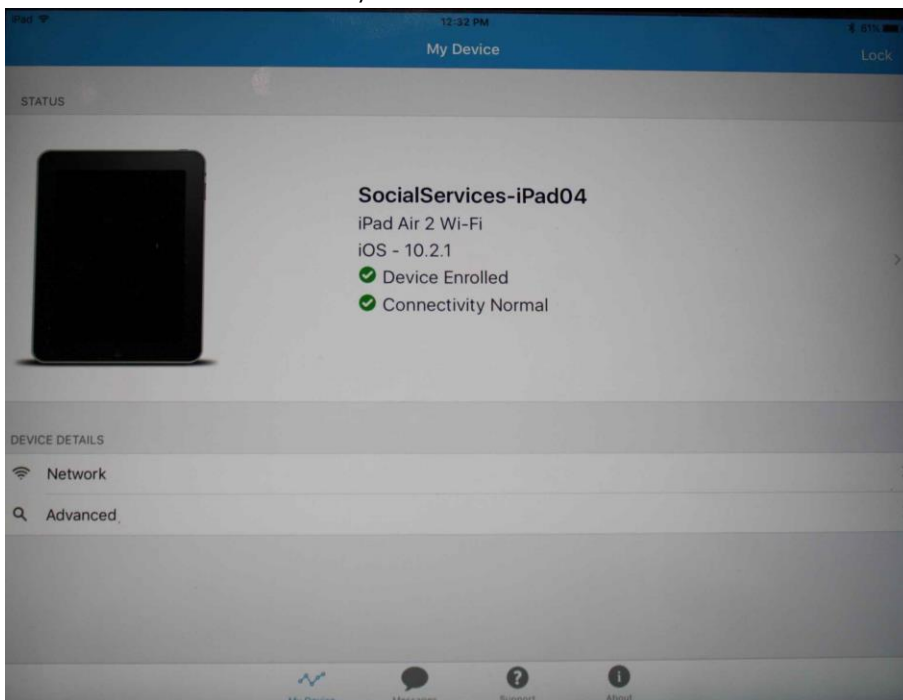




16. You may be redirected to enter and confirm a new passcode. You can use 2425 here or make up your own if you wish. This passcode only controls access to the agent app, **this will NOT change the passcode on the device's lockscreen.**



17. Once done you should see the agent screen that shows the device is enrolled and connectivity is normal.



18. Click the home button to return to the main screen.

Note:

You can now switch to your device's mail app. Your Mail, Calendar and Contacts will be available from your mslcc.com / mslcc.net exchange account.

Your device will also be sent settings to connect to the WiFi network "MSLCC-Admin" . Please use this network to receive mail while at MSLCC. Using MSLCC-Guest will not allow your mail to be connected while using this network.